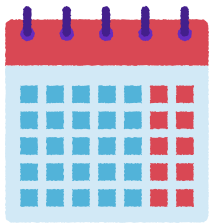


# HEARTS CONNECTED SUPPORT PROGRAM

Increase mental health services for patients and families with consideration to budgetary limitations!



## Weekend Coverage

Provide child life services Saturday-Sunday without needing to add additional FTE to your budget. Our child life specialists are available 7 days a week!



## Outpatient Facilities

Provide intentional child life services that are provided by request only to decrease cost, but maintain availability.



## Evening Coverage

Have child life services available for an extended time without overextending existing staff or increasing staffing. We are available until 8pm daily!

## HC Support Program Services:

- General child life coverage (options include weekends, evenings, or full-time 7 days a week)
- Outpatient procedure and surgery preparation
- Clinic support including diagnosis education, compliance support, procedure preparation and emotional processing
- Parent support and education

## About Us

The Hearts Connected Support Program is meant for organizations that want to provide child life services or increase pediatric mental health support, but are unable to do so due to budget limitations, staffing shortages, or other barriers.

Our program provides an opportunity for institutions to increase mental health support to children and teens at a lower cost than a FTE with benefits. Virtual programming, available 7 days a week, allows for staff and families to access child life services whenever and wherever needed.